



INSTRUCTION BULLETIN

No. 9007996
Machine: S30
Published: 07-2015
Rev. 00

NOTE: DO NOT DISCARD the Parts List from the Instruction Bulletin. Place the Parts List in the appropriate place in the machine manual for future reference. Retaining the Parts List will make it easier to reorder individual parts and will save the cost of ordering an entire kit.

NOTE: Numbers in parenthesis () are reference numbers for parts listed in Bill of Materials.

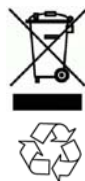
Installation instructions for **kit number 9007991**

SYNOPSIS:

This kit contains the parts needed to replace the pressure switch on S30 sweepers (Serial Numbers 000000 - 002105).
Please follow step-by-step instructions.

SPECIAL TOOLS / CONSIDERATIONS: NONE

(Estimated time to complete: 1 hour)



PROTECT THE ENVIRONMENT

Please dispose of packaging materials, used machine components such as batteries and fluids in an environmentally safe way according to local waste disposal regulations.

Always remember to recycle.

PREPARATION:

1. Park the machine on a clean level surface, turn off the machine, remove the key, set the parking brake, and remove the key.

FOR SAFETY: Before leaving or servicing machine, stop on level surface, set the parking brake, turn off machine, and remove key.

2. Disconnect the battery cables from the batteries.

WARNING: Always disconnect battery cables from machine before working on electrical components.

3. Open covers / shrouds necessary to access the pressure switch on the filter housing.

INSTALLATION:

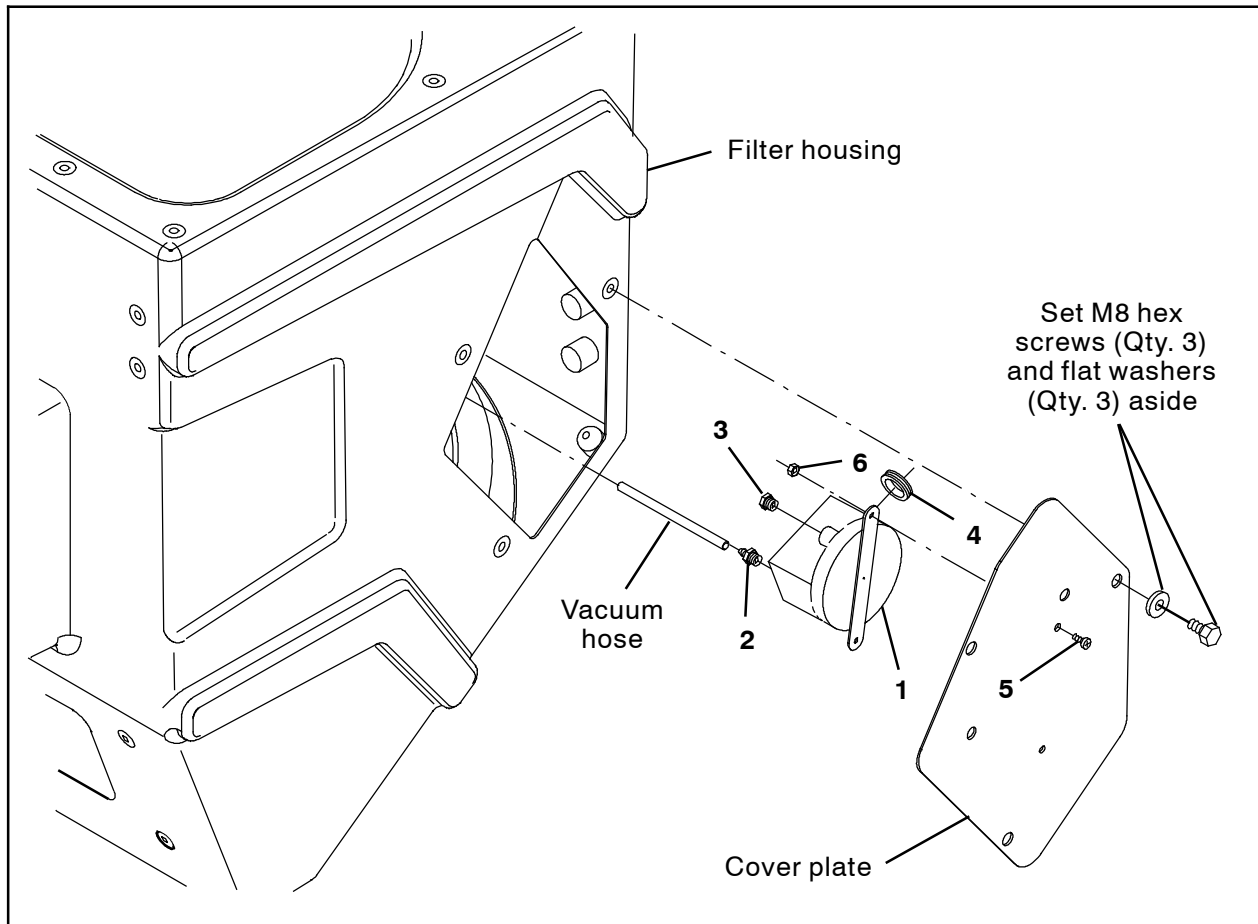


FIG. 1

1. Remove the three M8 hex screws and three flat washers securing the cover plate to the filter housing. Set the three M8 hex screws and three flat washers aside. (Fig. 1)
2. Carefully remove the cover plate from the filter housing. Do not break cable / hose connections when removing the cover plate. (Fig. 1)
3. Disconnect the hoses from the existing pressure switch.
4. Disconnect the main wire harness from the existing pressure switch. Note where the main wire harness 13FB/BLACK and 48BA/GRAY wires are connected in the pressure switch. These wires must be connected to the same locations on the new pressure switch (1).
5. Remove the pressure switch from the cover plate. Discard the pressure switch and the hardware that secured the pressure switch to the cover plate. (Fig. 1)
6. Insert the rubber grommet (4) into the new pressure switch (1). (Fig. 1)
7. Install the straight brass fitting (2) and the breather fitting (3) into the pressure switch (1). (Fig. 1)
8. Use two M4 pan screws (5) and two M4 hex nuts (6) to install the pressure switch (1) onto the cover plate. (Fig. 1)
9. Connect the main wire harness 13FB/BLACK and 48BA/GRAY wires to the pressure switch (1).
10. Connect the hoses to the pressure switch (1).
11. Reinstall the cover plate onto the filter housing. (Fig. 1)
12. Reconnect the battery cables to the battery.

13. Start and test machine. Observe the pressure switch hose connection for leaks. Close the hopper door, turn on the vacuum fan, and set the machine to the highest cleaning / sweeping speed. The clogged filter light should illuminate or there should be a clogged filter alert on the LCD.

Bill Of Materials For Switch Kit, Press, Replmt - 9007991

Ref.	Tennant Part No.	Description	Qty.
1	1045128	Switch, Press, 12vdc	1
2	40607	Fitting, Brs, Str, BM03 / PM02	1
3	82739	Fitting, Brs, Breather [02MP]	1
4	10632- 4	Grommet, Rbr, 0.62id F/0.9h, .06Matl	1
5	49697	Screw, Pan, Phl, M4 X 0.70 X 10, SS	2
6	02850	Nut, Hex Lock, M4 X 0.70 X 10, SS	2

TENNANT COMPANY
P. O. Box 1452
Minneapolis, MN 55440-1452